

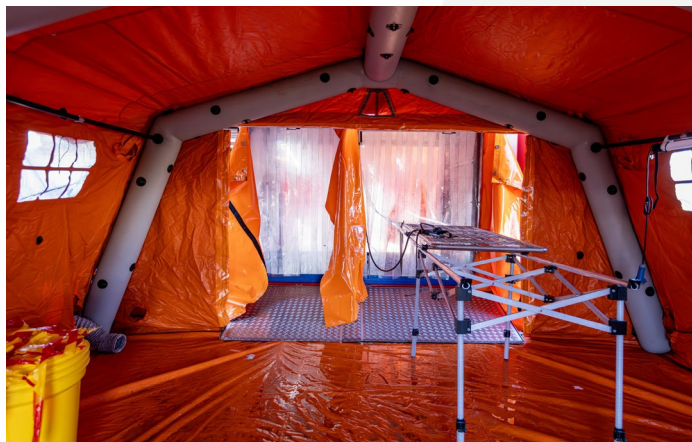
MAVA 6000 DECONTAMINATION CONTAINER

MAVA 6000 “Decont”™ Decontamination Container System is a new generation personnel decontamination system, which includes all operational materials for personnel and patient decontamination. The container itself is suitable for long-term storage and ready for operational use – just in 30 minutes. Functional to immediate and thorough decontamination with capacity of 60 persons/hour. Wide range of operational environment – including rescue missions, military operations, industry and also harbor facilities.

The entire decontamination process of MAVA 6000 is based on environmentally friendly waste management and minimized water consumption. Gender issues has been taken into consideration, Container System includes separate decontamination lines for women and men, including undress and dressing tents. (If the patient line is not needed concurrently)

Multi-use decontamination container system for various operational environment:

- Wide range of users from military to emergency services
- Designed for large-scale CBRN and TIM/TIC incidents
- Capacity against biological threats in entry points
- Suitable for oil-spill prevention tasks
- Capabilities to handle contaminated patients from immediate to thorough decontamination
- Capability to decontaminate non-walking patients at the same time.



TECHNICAL SPESIFICATIONS MAVA 6000	
20 ft ISO STANDARD CONTAINER	
L x W x H m	6,05 x 2,44 x 2,59 m
Weight (appr.)	6000 kg
WATER HEATER Hotbox 200	
L x W x H cm	62,5 x 66 x 96,5 cm
Weight	80 kg
Max Diesel fuel consumption	7,8 l/h
Water supply capacity	70 l/min
Temperature	range 20 C° - 70 C° optimal max 30 C°
Power requirement	230 V
WASTE WATER COLLECTING BAGS 4 pc	
L x W x H cm (fullfilled)	70 x 85 x 86 cm
Capacity	500 l / pc
Weight (empty)	3 kg
AUTOMATICAL SHOWER SYSTEM	
Water pressure	range 3 – 8 bar optimal 4 – 5 bar
Water consumption, 1 person (walking) 30 sec for detergent, 60 sec for rinsing	22 l / person
Water consumption, 1 strecher patient (handshowers 2 pc total consumption)	16 l / person
Decontamination capacity (2 lines for walking persons)	60 person / h
ELECTRICITY	
Internal system	24 V
Magnetic valves in technical space	24 V
External system	230 V 50 Hz
AIR HEATER Talhu Climat 50	
L x W x H	146 x 65 x 1001 cm
Weight	132 kg
Heating capacity	50 kW
Max. Diesel fuel consumption	5,4 l/h
Heated air supply capacity	3000 m³/h
Fuse	10 A
INFLATABLE TENTS TAG 29L 2 pc	
L x W x H m	5,15 x 5,60 x 2,80 m
Surface area	29 m2 kg
Weight	90 kg